

# JAMFLASH®

U.S. Patent # 6244001

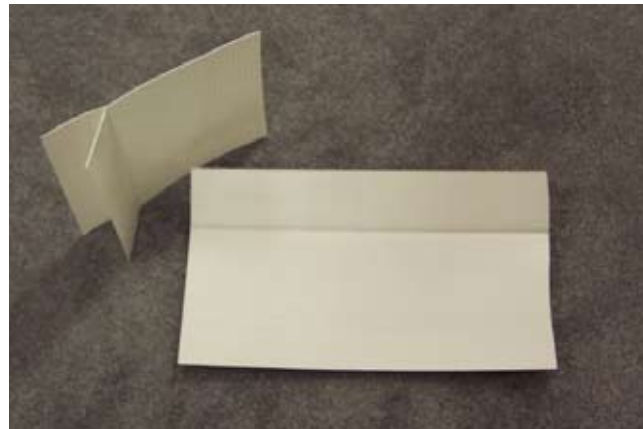


43 Community Drive  
Sanford, ME 04073  
(800) 551-2828 Fax (888) 819-2592  
www.yorkmfg.com

## DESCRIPTION

JAMFLASH® flashing is a semi-rigid, 40 mil thick, extruded flashing product which provides a primary waterproofing barrier at the jambs of windows, storefronts, curtain-walls and doors installed in the exterior walls of buildings.

Fabricated from a custom blend of resin modified UV resistant plastic, Jamflash® flashing will resist jobsite exposure to chemicals and abuse. This same formulation will last the intended life of your building.



## FEATURES & BENEFITS

- Compatible with sealant materials
- Compatible with self adhering flashings and their accessory materials
- Easily cut to required lengths
- Easily trimmed to the face of the window due to the “vee” notches formed into the 7” long leg
- Greater longevity than sealant materials
- Less costly than a secondary sealant joint
- Less problematic and easier to install than flexible membrane or sheet metal flashing
- Will not rip, tear or get lodged in the cavity during construction
- Provides an effective connection to the window for air barrier systems

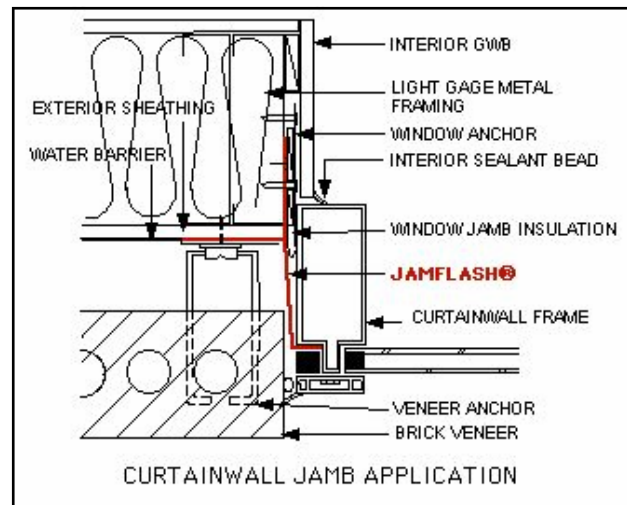
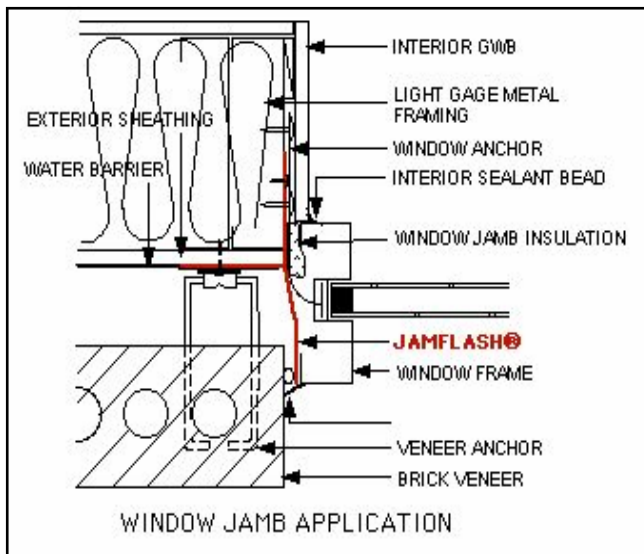


## PACKAGING

Jamflash® flashing is readily available in 8', 10' and 12' standard lengths and is packaged 20 pieces per box.

Custom lengths and sizes can be provided with a 30 day lead time.





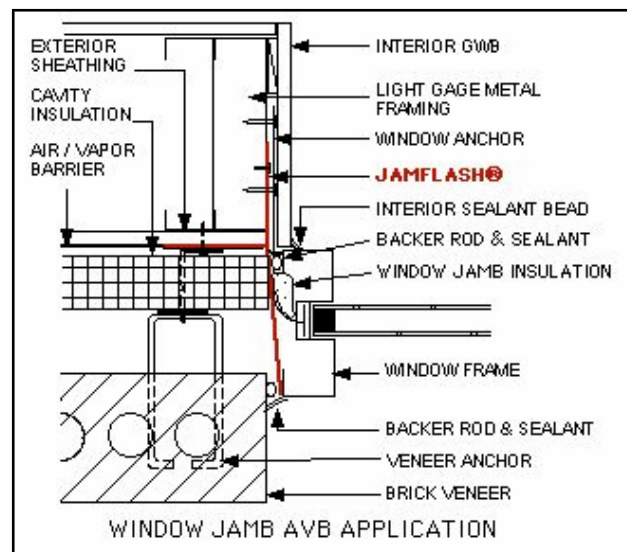
## INSTALLATION

1. Install window sill flashing
2. Seat Jamflash® flashing tightly to both surfaces of the rough opening jamb.
3. Install fasteners appropriate for the substrate through both 3” legs of the flashing at 12” O.C. vertically.
4. Install the water barrier product over the back-up wall, lap the water barrier over the 3” leg that is attached to the exterior face of the back up wall and seal the water barrier to the Jamflash® flashing.
5. Install the building veneer.
6. Install the window or door frame.
7. Trim the 7” long leg flush to or just behind the face of the frame by making a small cut at the top or bottom of the Jamflash® flashing at one of the “ vee “ notches and pulling on the outer edge so as to peel away the excess portion .
8. Install backer rod in the joint between the window frame and the back-up wall, fill the joint with sealant and tool the material.

## LIMITED WARRANTY

The manufacturer warrants this product to be free of defects in workmanship and materials for the life of the structure. If any product proves to contain manufacturing defects that substantially affect its performance, the manufacturer will, at his option, replace it or refund its purchase price. The dollar value of the manufacturer’s liability shall not exceed the purchase price of the material in question.

At curtainwall jambs, bend the 7” long leg of the Jamflash® flashing at a “ vee “ notch and return into the frame at the glazing pocket behind the equalizer and then install the pressure



## Air / Vapor Barrier ( AVB ) Systems

Jambs for exterior wall systems with air barriers systems must have a seal between the air barrier plane and the window jamb. This can be accomplished by:

1. Filling the joint with batts, rock wool or mineral wool insulation and then installing a sealant bead at the interior face of window from the frame to the Jamflash® flashing, or
2. Filling the joint with spray polyurethane foam sealant.